

Northeast Oregon is a hub of vibrant arts and cultural communities. From the breathtaking Wallowas to the majestic Elkhorns, the region's stunning landscapes inspire artists from around the world to capture and preserve its beauty.

Each community offers a unique artistic experience, from live music and theater to galleries and festivals. The best way to explore Northeast Oregon's rich arts and culture scene is by visiting each county's main art center. Here's where to find them:



### Art Center East

1006 Penn Ave,  
La Grande, OR 97850  
(541) 624-2800  
[www.artcentereast.org](http://www.artcentereast.org)

### Crossroads Carnegie Art Center

2020 Auburn Ave,  
Baker City, OR 97814  
(541) 523-5369  
[www.crossroads-arts.org](http://www.crossroads-arts.org)



### Josephy Center for Arts and Culture

403 Main St,  
Joseph, OR 97846  
(541) 432-0505  
[www.josephy.org](http://www.josephy.org)



## Begin Your Adventure!



## Scan Me To View An Interactive Map With Over 100 Places To Visit!

# Northeast Oregon Arts Trail

## Celebrating the Arts in Baker, Union, & Wallowa Counties

For accessibility information and more, visit:

## [neoregonarts.org](http://neoregonarts.org)

  @NEOregonArtsTrail

Photo By: Robin Coen Imnaha



**TRAVEL  
OREGON**

This project was  
made possible in  
part by a grant  
from Travel Oregon.



DISCOVER MORE THAN WHAT'S ON THE MAP—EXPLORE A WORLD OF LOCATIONS WAITING FOR YOU ON OUR WEBSITE!

**UNION COUNTY:**

**(S) = Seasonal**

**La Grande:**

1. Art Center East
2. The Nightingale Gallery
3. The Potter's House
4. Birddog Glass
5. Cook Memorial Library
6. BLANK
7. BLANK

**Union:**

8. Union County Museum

**Elgin:**

9. Elgin Museum & Historical Society
10. BLANK

**WALLOWA COUNTY:**

**Enterprise:**

11. Fishtrap
12. OK Theatre
13. Skylight Gallery in the Bookloft Bookstore
14. Moonshine Glass Art

**Joseph:**

15. Josephy Center For Arts & Culture
16. Multiple Art Galleries on Main St.
17. Bronzes on Main St.
18. Wallowa County Museum
19. Maxville Heritage Interpretive Center

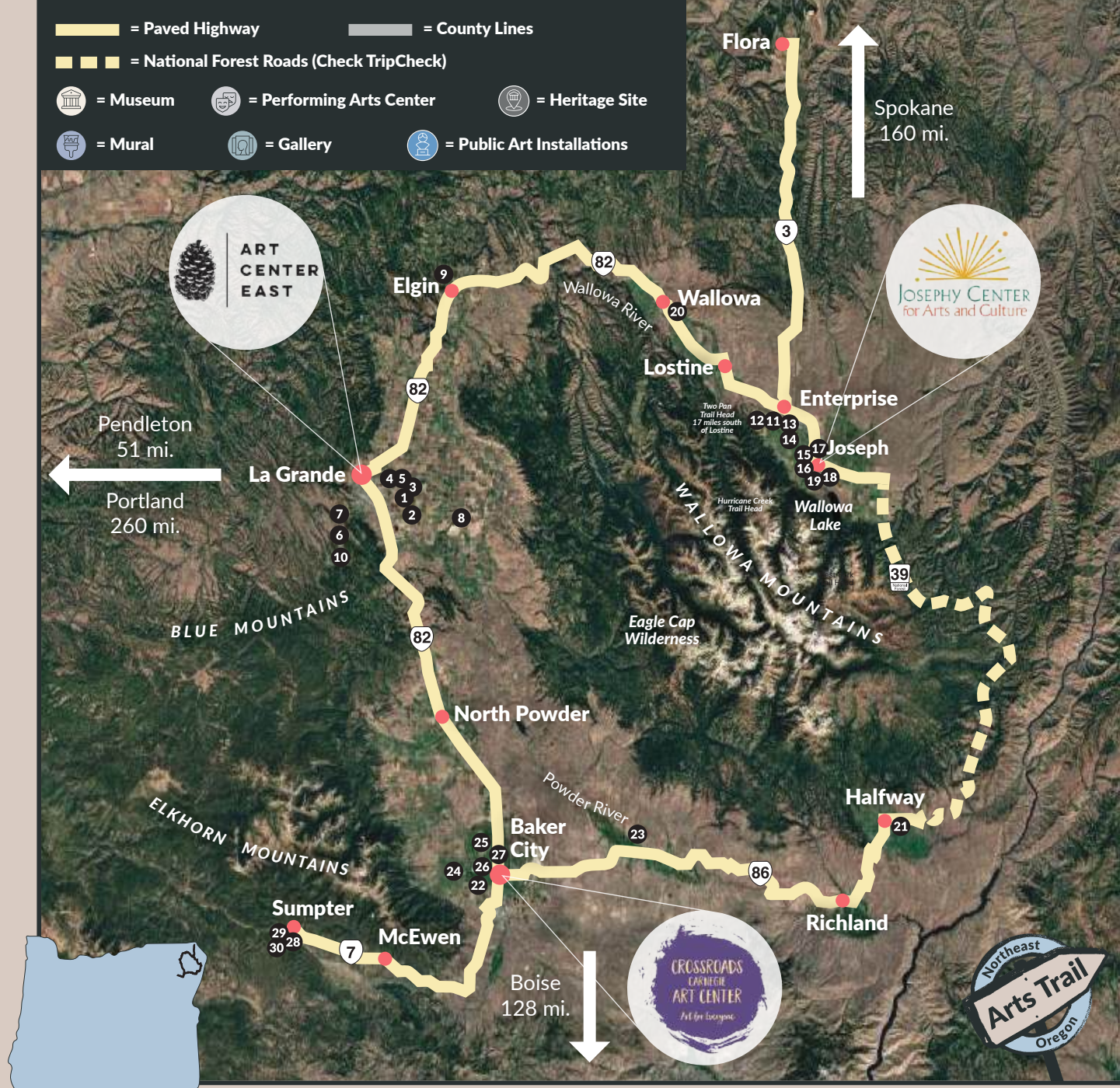
**Wallowa:**

20. Nez Perce Wallowa Homeland Visitor Center

**BAKER COUNTY:**

**Halfway:**

21. Pine Valley Community Museum (S)



**Baker City:**

22. Crossroads Carnegie Art Center
23. National Historic Oregon Trail Interpretive Center
24. Churchill School
25. Baker Heritage Museum & Leo Adler Museum
26. Eastern Oregon Regional Theatre
27. Baker City Downtown Galleries

**Sumpter:**

28. Lynn Bean Jewelry and Gallery
29. Sumpter Valley Railroad (S)
30. Sumpter Valley Dredge (S)